

ADVANCED EXPERTISE TECHNOLOGY PVT. LTD.

Manufacturer of Pharma/Chemical Equipments
Fluoropolymer Coating & Lining (Rotolining)

PRODUCT CATALOGUE

"Serving From 6 Manufacturing Units Across India"

Gujarat - 2 units, Mumbai - 2 units, Vizag & Hyderabad



SCAN TO VIEW VIRTUAL BROCHURE



ADVANCED BAG LIFTING CENTRIFUGE (ITD)



ADVANCED SPARKLER FILTER (ZERO HOLD UP)



ADVANCED PHARMA PEELER CENTRIFUGE



ADVANCED ROTOCONE VACUUM DRYER



About Us



M/s Advanced Expertise Technology Pvt Ltd is a leading supplier of Pharmaceutical Equipment along with Fluoropolymer Coating & Lining of Equipments and Parts. Used in API, BULK Drug, pharmaceutical, Food, Fine Chemical, Inorganic Chemical, Petrochemical, Ore and Surface treatment.

HALAR/PVDF/ETFE/FEP/PTFE/PFA/PEEK/HDPE Coating is recommended where Highly Corrosive and Abrasive product are processed. This Corrosion resistance coating is carried out on MS/SS material of processing equipment, like Centrifuge Machine, Rotary Vacuum Cone Dryers, Agitated Nutsche Filters, Heat Exchanger, Agitators, Receivers, Tanks, vessels Pipes, Thermo wells Fittings, Strainers, Valves and Spares for Glass Lined Equipment etc.

We have an in house facility for fabrication of process equipment with Roto lining facilities for fluoropolymer coating backed up by advanced technology & skilled team.

We have set a benchmark as one-point solution provider to customers by equipment manufacturing with Coating under one roof.

We perform repair works for Centrifuge, VTD, RCVD Recoating and Relining of existing equipments.

We have a qualified team who are available 24/7 to assist our customers for a selection of fluoropolymer coating works as per process requirement.

Our service team will reach any designated site within 24 hours. We are based in Hyderabad, Vizag, Chennai, Gujarat & Mumbai Locations.



Industries we cater:

Pharmaceutical API & Formulation

Pigments & Dyes

Chemical

Cosmetics

Pesticide

Food & Spices

Providing premium curated services since 1989

OUR TECHNICAL CAPABILITIES



ISO certified
CE
ATEX



Curated designs as required



In-house Fabrication facility & HALAR/ ETFE/ PFA/ FEP/ PVDF/ PP Coating & Roto Lining facility run by a skilled team.



Largest coating facilities in India with all required FDA/USDA/NSF certification approved



Specially dedicated team of Service Engineers with vast experience on Erection, Commissioning and Troubleshooting.



Expert Material flow handling and supply chain management team for sourcing and delivering



Design backed up by qualified Mechanical Engineers, Chemical Engineers, Process Engineers, Electrical & PLC Programmers and 24x7 Service Engineers.

FLUOROPOLYMER COATING

1

HALAR (ECTFE)

2

PERFLUOROALKOXY ALKANE (PFA)

3

ETFE / PTFE / TEFZEL

4

POLYPROPYLENE (PP)

5

POLYVINYLIDENE FLUORIDE (PVDF)

6

PEEK

DRYING EQUIPMENT

1

AIRTRAY DRYER

2

ROTARY CONE VACUUM DRYER

3

VACUUM TRAY DRYER

4

AGITATED NUTSCHE DRYER (ANFD)

CONTROLLING SYSTEM

5

PLC/FLP CONTROL PANEL

6

NITROGEN BLANKETING SYSTEM

7

FLOW CONTROL VALVE

FILTER EQUIPMENT

1

CENTRIFUGE

2

SPARKLER FILTER

3

PRESSURE NUTSCHE FILTER

4

BASKET FILTER

5

CARTRIDGE FILTER

6

AGITATED NUTSCHE FILTER (ANF)

7

LEAF FILTER

8

ROBO FILTER

HEAVY EQUIPMENT

1

PRESSURE VESSEL

2

STORAGE TANK

3

RECEIVERS

4

HEAT EXCHANGER

5

DISTILLATION COLUMN

MESH WELDING



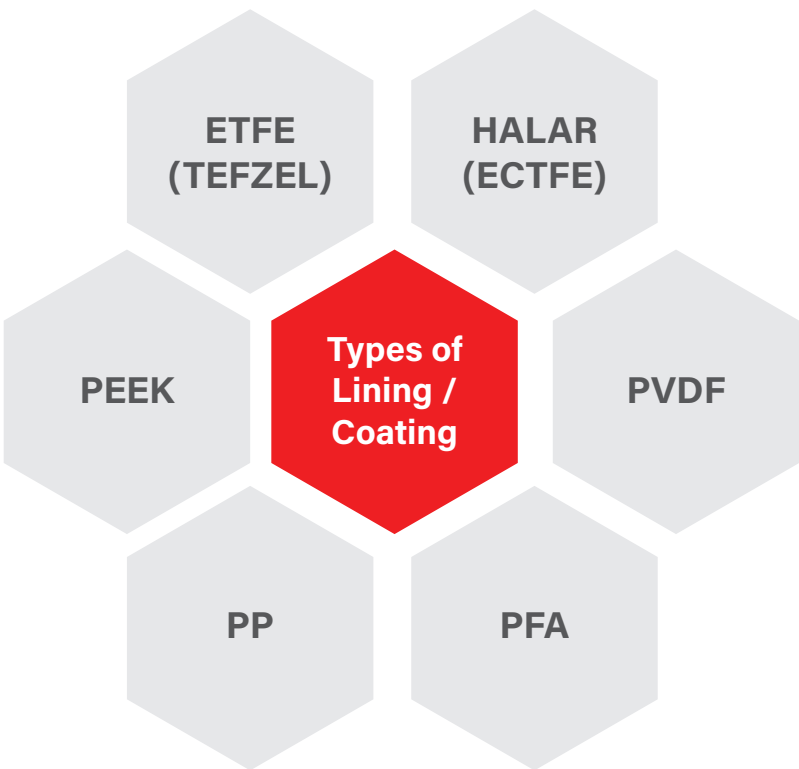
Fluoropolymer Lining/ Coating:

Fluoropolymer contains molecules of carbon and fluorine. It is characterized by high resistance to solvents, acids, and bases. It is a high-performance plastic material which is used in harsh chemical and high-temperature environment, primarily where a critical performance specification must be met.

It is majorly used for industrial coatings because they possess a positively unique quality.

- Chemical resistance
- Corrosion resistance
- Non-stick property
- Low friction
- Non-Wetting & Static Dissipation

Different Types of Fluoropolymers:



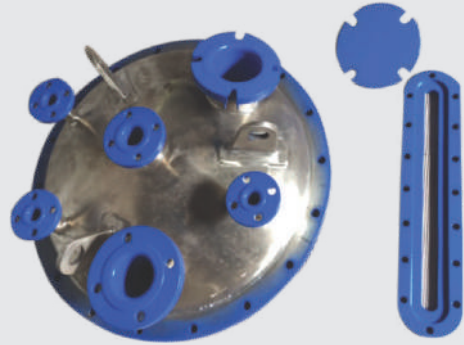
FDA/USDA/NSF Approved Fluoropolymer Coating

Specific fluoropolymer coatings are FDA and NSF compliant, USDA approved as per ISO 10993, and are used extensively in various environment in which non-stick, insulating, and chemical or corrosive protective properties are paramount. We have a longstanding history of success in industries such as food & beverage processing and packaging, API, pharmaceutical & chemicals, and Petrochemical, Ore & Surface treatment.





**Antistatic Halar Coated
Centrifuge Machine**



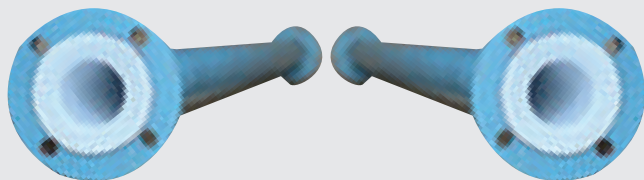
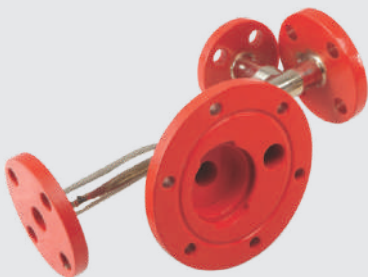
ETFE Coated



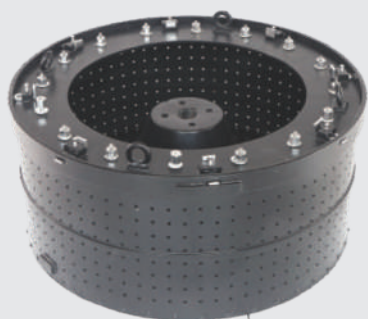
ETFE/TEFZEL Coated Vessel



PFA Coated Vessel



Pipe & Fitting with Lining & Coating



Antistatic Halar Coated Basket



TEFZEL Coated Column



**PFA Coated Vessel With
Welded Baffles**



Halar Coated Vessel



PFA Coated Agitator



Xylon Coated Valve Housing

Filter

- Agitated Nutsche Filter
- Pressure Nutsche
- Vacuum Nutsche
- Basket Filter
- Cartridge Filter
- Bag Filter
- Horizontal Plate
- Sparkler

Mixers

- Nauta
- Ribbon Blender
- Polygon Blender
- Static Mixer
- Planetary Mixer

PFA Ruby Red Coated



Centrifuges

- Top Discharge
- Bottom Discharge
- Lifting Bag Type
- Peeler Centrifuge

Tank

- Storage Tank
- Horizontal / Vertical
- Jacketed Receiver
- ML Tank
- Dosing Tank
- Vacuum Receiver

PP Coated



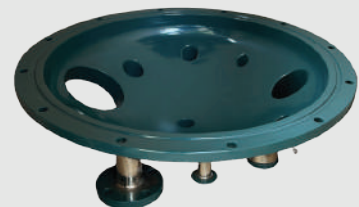
Dryer

- ANFD
- VTD
- Tray Dryer
- FBD
- Rotary Cone
- Double Cone
- ATFD
- Rotary Drum

Pipe & Fitting

- Piping
- Fitting-Bend
- Tee-Reducer
- Valves-Diaphragm
- Butterfly & Ball Valve
- Thermo Well

Halar Coated



Reactor

- Anchor
- Impeller
- Special Design Blades

Columns

- Distillation
- Scrubber
- Absorber

PVDF Coated ANFD Base



TEFZEL Coated



It is a computer controlled lining technology using rotational movement of equipment along with sintering process. This process creates seamless lining with virtually uniform lining thickness from 1mm to 8mm. Roto lining of HDPE, PF, PVDF, HALAR, ETFE, FEP, PFA is available in natural, FDA or Antistatic Conductive Lining.



Advantages of Roto Lining:

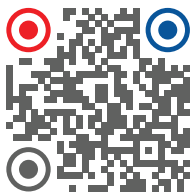
1. Better Chemical Resistance as natural Polymer is used and is heated one, unlike repeated heating in Coating, better polymer properties derived.
2. Better lining bonding to equipment because of centrifugal action of rotating movement and durable due to direct bonding to equipment without adhesive.
3. Lining thickness ranging between 1mm to 8mm within single heating.
4. Faster delivery due to minimum downtime.
5. Mono block type tanks & Receivers without main body flange can be lined.
6. Seamless without any weld joints.
7. Suitable for full vacuum.
8. Suitable for heat transfer application.
9. Antistatic conductive, FDA Lining available.
10. Repair possible at site.
11. Non Stick properties

COMPARED WITH COATING

- Thicker Lining Possible Upto 8mm
- Uniform Lining Thickness
- Better chemical resistance as polymer heated only once above its melting point.
- Economical as less wastage of raw material.
- Longer pipes can be lined from inside
- No over spray on outside surface.
- Less Delivery Time.

COMPARED WITH SHEET LINING

- No welding line/ Seamless surface
- Better Bonding with metal without air gap
- Better operating Temperature up to 200°C
- Possibility of heat transfer
- Suitable for full vacuum
- Better purity of product as no adhesive is used
- Higher operating pressure for equipment
- Available Antistatic Conductive Lining with Resistance of 10e4 to 10e8 OHM
- Less Delivery Time



ADVANCED SPARKLER FILTER (ZERO HOLD UP)



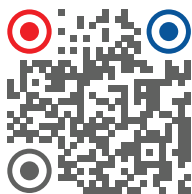
ADVANCED acquires various range of GMP Model Zero Hold up Sparkler Filter (Horizontal type) used in Pharmaceuticals, Biotech, API, Bulk-Drugs, Chemicals, Distilleries, Food, and other related Industries.

The operation of the sparkler filter press is to filter the impure liquid. Placed on top of each horizontal plate with increasing pressure, the filter media holds back the impurities and allows the filter to pass through the centre by interlocking cups, which takes the filtrate to the outlet of the filter.



- Capacity (Dia In Inch) - 8, 14, 18, 24 & 33 with Suitable No. of Plates.
- Accessories- Pressure Gauge, Safety Valve, Air Vent, Ball Valves, Sampling Valve, Filter Media (PP/Cellulose) & Suitable Elastomer Silicon/ PTFE/ EPDM/ Viton.
- cGMP Model and Design as per ASME guidelines.
- MOC- SS304/SS316/ SS316L/ Hastelloy/ PP/ Solid PTFE
- Suitable model to be suggested as per the actual requirements of holding capacity and filtration area.

- Various types of Coating for Wet parts like- HALAR/ ETFE/PFA/PVDF/PP (Food Grade) & Hastelloy for friction parts etc.
- Available Lining- PVDF, PP PFA & Teflon.
- Options for Various range of Pumps (KSB, Antico, QVC, Flurolined, Sulzer, Johnson, Alfa Laval, or as per requirement).
- Qualified Documents- IQ, DQ, OQ & FAT Protocol

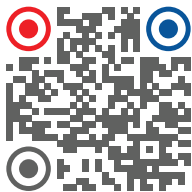


ADVANCED NUTSCHE PRESSURE FILTER

Nutsche Filter is a closed vessel designed to separate solid & liquid by filtration under pressure or vacuum. The closed system ensures odorless, contamination-free, and non-polluting working conditions maintaining product purity and hygiene.



- Capacity (Dia in MM)- 300, 500, 550, 600, 900, 1000 and 1200
- Accessories- Pressure Gauge, Ball Valves, & Suitable Elastomer Silicon/PTFE/EPDM/Viton.
- GMP Model and Design as per ASME guidelines.
- Various types of Coating for Wet parts like- HALAR/ETFE/PFA/PVDF/PP (Food Grade) & Hastelloy for Friction Parts etc.
- Available Lining- PVDF, PP and Teflon.
- Qualified Documents- IQ, DQ, OQ and FAT Protocol



ADVANCED MANUAL TOP DISCHARGE



Manual Top discharge A regular and always in demand 4-point suspension Centrifuge which is widely used in various Pharmaceutical, Chemical, R & D – Plant, Cosmetic, Food industry.



Material of Construction:

- Carbon Steel, Stainless Steel, Hastelloy etc MOC.
- Fluoropolymer Coatings like Halar (ECTFE), PVDF, ETFE, Teflon (PFA), Rubber Lined etc. can be perform on contact surface.
- Coating can be provided on the contact parts as well as on the exterior body (non-contact surface) to prevent spills & corrosive atmosphere

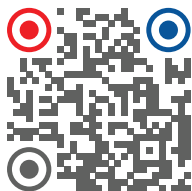
Advantages:

- Simple in construction.
- Easy manual removal of solids from top portion of the equipment.
- Residue next to zero.

Accessories offered with equipment.

1. Inverter drive
2. FLP Panel
3. N2 Purging arrangement
4. CIP arrangement
5. Zero speed interlock
6. Heel blow back
7. Vibration tripper limit switch
8. Vibration monitoring system
9. FLP switch / proxy sensor
10. N2 blanketing system
11. Customized design

ADVANCED MTD Centrifuge Model	Unit	18" MTD	24" MTD	36" MTD	48" MTD	60" MTD
Basket Diameter	mm.	457	610	915	1220	1524
Basket Depth	mm.	300	300	450	450-500	450-600
Working Capacity under lip	lts.	24	48	169	294-327	467-519
Basket load (Max)	kgs.	24	48	169	294-327	467-519
Basket Revolutions	rpm.	900	900	900	900	800
Centrifuge Force	G.	206.2	275.2	412.8	550.4	543.3
Filtration Area	sq.mts.	0.43	0.57	1.29	1.72-1.92	2.15-2.87
Motor Power	kW.	2	3	7.5	15	20
Overall Dimension:						
Length	mm.	1050	1350	1800	2000	2500
Width	mm.	750	1000	1250	1500	2000
Height	mm.	1300	1500	1900	2100	2100
Empty Weight	kgs.	800	1150	2750	4200	5500



Operates on the principle of centrifugal force to separate the solids from the liquid. Horizontally designed useful for batch and continuous centrifuge processes. This pharma version is easy to clean and validation with full access to all process wet parts, assured by a fully openable casing.

This equipment can be used in a clean room area application where it is separated by through wall. Feeding, Washing, discharge carried out in processed area where motor, hydraulic power, bearing housing kept. Widely use in APIs, Chemical, pharmaceutical intermediates, antibiotics and various industries

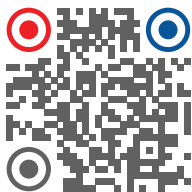
Material of Construction:

- Stainless Steel, Hastelloy etc MOC.
- Fluoropolymer Coatings like Halar (ECTFE), PVDF, ETFE, Teflon (PFA), Rubber Lined etc. can be done on contact surface
- Coating can be provided on the contact parts as well as on the exterior body (non-contact surface) to prevent spills & corrosive atmosphere.

Advantages:

- Robust & reliable design for durability & continuous smooth operation.
- Excellent design feature as per "cGMP" norms.
- Lower residual cake moisture due to high centrifugal force.
- Horizontal peeler centrifuge provides higher centrifugal forces than vertical peeler, and increases performances and flexibility.
- Due to continuous discharge of filtered liquid through perforated inner surface of rotating basket, the pressure drop, main driving force of filtration is increased across the solid cake & filter medium, as a result, the filtration rate can be boosted.





Operates on the principle of centrifugal force to separate the solids from the liquid. Horizontally designed useful for batch and continuous centrifuge processes. This chemical version is used to separate medium to large quantities of product that can be washed and then spin-dried.

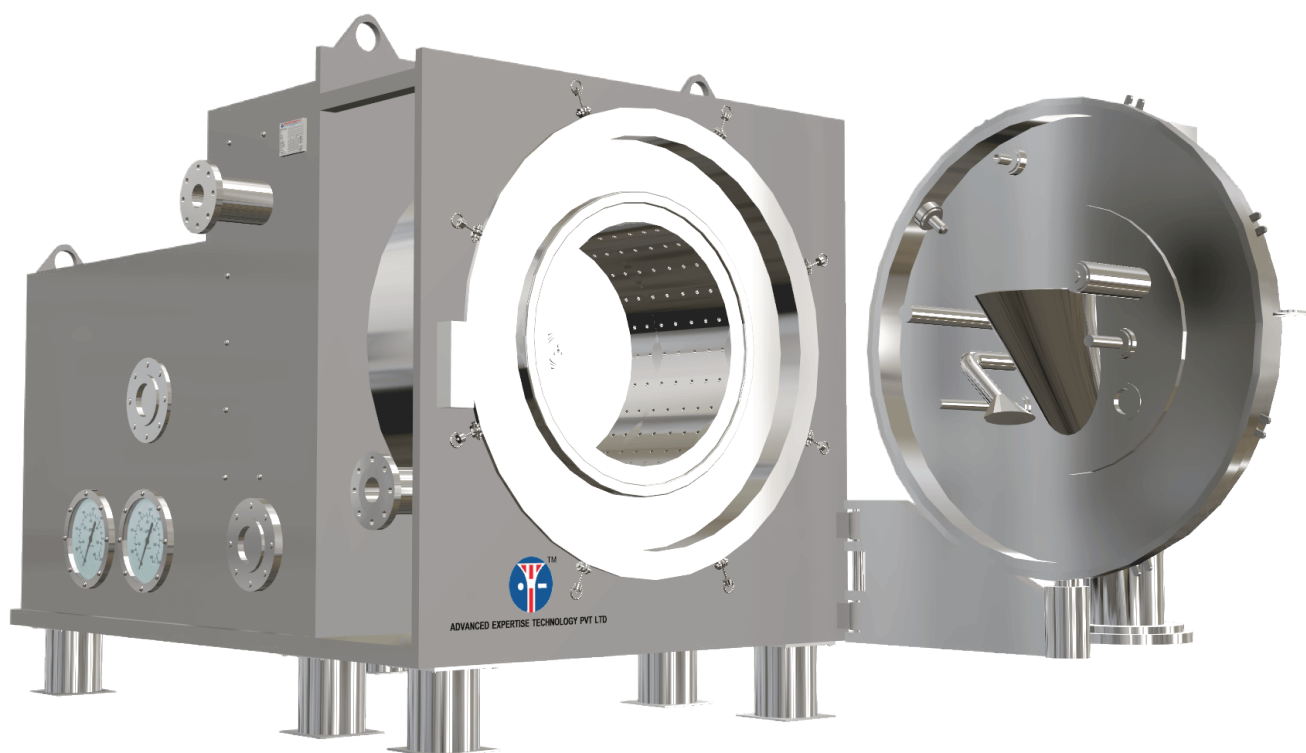
These machines are fit with a highly polished discharge chute with zero dead ends to prevent solid accumulation. Widely used in APIs, Chemical, pharmaceutical intermediates, antibiotics, petrochemical and various industries.

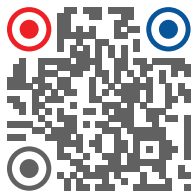
Material of Construction:

- Carbon Steel, Stainless Steel, Hastelloy etc MOC.
- Fluoropolymer Coatings like Halar (ECTFE), PVDF, ETFE, Teflon (PFA), Rubber Lined etc. can be done on contact surface
- Coating can be provided on the contact parts as well as on the exterior body (non-contact surface) to prevent spills & corrosive atmosphere.

Advantages

- High speed rotating machine, classified as "High G" centrifuges.
- Full opening of lid gives complete access to entire processing area.
- Easy to Maintain, clean and inspection.
- Low residual moisture achieved by high G effect.





ADVANCED BOTTOM DISCHARGE
CENTRIFUGE



A unique design for unloading of solid products from the bottom of a 4-point suspension Centrifuge which is widely used in various Pharmaceutical, Chemical, Cosmetic, Food industry, Mining, Rubber, Crop Protection etc industries.

Material of Construction:

- Carbon Steel, Stainless Steel, Hastelloy etc MOC.
- Fluoropolymer Coatings like Halar (ECTFE), PVDF, ETFE, Teflon (PFA), Rubber Lined etc. can be done on contact surface
- Coating can be provided on the contact parts as well as on the exterior body (non-contact surface) to prevent spills & corrosive atmosphere.

Advantages:

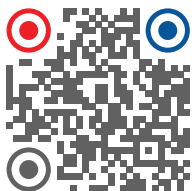
- Simple in construction.
- Easy manual removal of solids from the bottom side of equipment.
- No scrapper knife required as scrapper exist in machines.
- Residual is almost zero



Accessories offered with equipment.

1. Inverter drive
2. FLP Panel
3. N2 Purging arrangement
4. CIP arrangement
5. Zero speed interlock
6. Vibration tripper limit switch
7. Vibration monitoring system
8. FLP switch / proxy sensor
9. Full Automation
10. Customized design

AETPL BD Centrifuge Model	Unit	18	24	36	48	60
Basket Diameter	mm.	457	610	1220	1220	1524
Basket Depth	mm.	300	300	500	450-500	450-600
Working Capacity under lip	lts.	24	48	300	294-327	467-519
Basket load (Max)	kgs.	24	48	375	294-327	467-519
Max. Basket Revolutions	rpm.	900	900	1000	900	800
Centrifuge Force	G.	206.2	275.2	682	550.4	543.3
Filtration Area	sq.mts.	0.43	0.57	1.91	1.72-1.92	2.15-2.87
Motor Power	kW.	2	3	15.0	15	20
Length	mm.	1050	1350	2150	2000	2500
Width	mm.	750	1000	1600	1500	2000
Height	mm.	1300	1500	2325	2100	2100
Empty Weight	kgs.	800	1150	4500	4200	5500



ADVANCED BAG LIFTING CENTRIFUGE



Improved design of Manual discharge centrifuge. After removal of solvent/liquid the solid products is completely discharged by lifting the filter bag from the Top. The filter bag is lifted by Bag lifting device (BLD) hence complete discharge of solids can be achieved. This 4-point suspension system can be used in various Pharmaceutical, Chemical, R & D – Plant, Petrochemical, Cosmetic, Food industry etc industry.

Material of Construction:

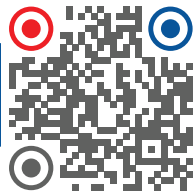
- Carbon Steel, Stainless Steel, Hastelloy etc MOC.
- Fluoropolymer Coatings like Halar (ECTFE), PVDF, ETFE, Teflon (PFA), Rubber Lined etc. can be done on contact surface
- Coating can be provided on the contact parts as well as on the exterior body (non-contact surface) to prevent spills & corrosive atmosphere.



Advantages:

- Time required for Solid Cake removal is less.
- Spill of cake on the floor is minimum.
- Manual contact with product can be avoided.
- Residual is almost zero.
- Easy cleaning of basket.
- Production can be increased.

AETPL Bag Lifting Centrifuge Model	Unit	18" LBT	24" LBT	36" LBT	48" LBT	60" LBT
Basket Diameter	mm.	450	600	900	1200	1500
Basket Depth	mm.	300	300	450	450-500	450-500
Working Capacity under lip	Lts.	23	47	159	285 - 315	442 - 5 90
Basket load (Max) @ Bulk Density 1 gm/cc	kgs.	23	47	159	285 - 315	442 - 590
Basket Revolutions	rpm.	900	900	900	900	800
G. Force	G.	203	271	406	542	535
Filtration Area	m2	0.42	0.57	1.27	1.7 - 2.26	2.12 - 2.83
Motor Power	kW.	2	5	7.5	15	20
Overall Dimension						
Length	mm.	1050	1250	1800	2000	2500
Width	mm.	750	900	1250	1500	2000
Height	mm.	900	1825	2500	3100	3500
Empty Weight	kgs.	800	1150	3200	4200	5700



Rotocone Vacuum Dryer (RCVD) is suitable for drying of material that cannot resist high temperature, material which are easily oxidized, volatile material which should be retrieved, material that are strong irritants and poisonous in nature.

Material of Construction:

- Capacity: 5 - 4000 LTRS
- MOC- SS304/ SS316/ SS316L/ Hastelloy
- cGMP Model and Design as per ASME guidelines.
- Drying at a lower temperature under vacuum.
- Complete discharge.
- Closed system – Automatic charging & discharging.
- Qualified Documentation like- IQ, DQ, OQ & FAT Protocol

Optional Items/Accessories:

- Provision for Lump breaker.
- Nitrogen purging arrangement.
- Various types of Coating for Wet parts like -HALAR/ ETFE/ PVDF /PFA (Food Grade).
- Direct drive to avoid greasing of the gear.

NB: Spare items also available like Gasket, Vacuum Shaft, Valves, and other related components, overall maintenance.



Reactor is the generic term for a type of vessel widely used in processing industry. A typical reactor consists of a storage tank with an agitator and integral heating or cooling system.

Application: Pharma, Chemical, Food and Beverages etc.

- Capacity: 5 - 25000 LTRS
- cGMP and Non-GMP Model Available.
- MOC- SS304/ SS316/ SS316L/ Hastelloy.
- Jacketed/Limpet/Fermenter/Reaction Vessel.
- Qualified Documents: IQ, DQ, OQ and FAT
- Protocol

NB: Spare items also available like Agitator Assembly, Man Hole Covers, Gaskets, Baffles, Discharge Valves, and other related components.



Optional Items/Accessories: -

- SIP/ CIP
- Reactor Assembly
- Various types of Coating for Wet Parts like -HALAR/ ETFE/ PVDF/ PFA (Food Grade).

ADVANCED VIBRO SHIFTERS

This machine works on the principle of gyratory vibrations. The material is separated based on its particle size. Once the motor gets energized, vibration is caused in the screen/sieve making the material travel across the sieves according to its particle size.



Material of Construction:

- Capacity (In Inch) – 12, 20, 30, 36, and 48
- cGMP Model and Design as per ASME guidelines
- MOC- SS304/ SS316/ SS316L/Hastelloy
- Qualified Documents- IQ, DQ, OQ and FAT Protocol

Optional Items/Accessories: -

- Ultrasonic vibrating screen mesh arrangement for better results (Powder sifting acceleration, less powder wastage, a decrease of sieve screen blinding and Clogging)
- Mesh De-Blinding Kit with Silicon/ PTFE Balls.
- Flame safe and Flameproof Motor(Imported)
- FLP DOL Starter.
- Magnetic Grill
- Single/ Double/ Three/ Four deck.
- USFDA Grade Lead-free Silicon molded Screen.

This is a self-contained portable unit useful for high speed granulating, pulverizing, mixing, shredding, and chopping of a wide range of wet and dry materials without special attachments. It operates on the principle of variable force swing beaters having both knife and impact edges rotating within a selected screen to get the required size reduction. The material is fed in the hopper, shredded and milled through beaters consisting of knife and impact edges.



Optional Items/Accessories:

- Belt Drive
- Direct Drive with VFD
- Full SS Construction including Bearing Housing and Motor mounting Plate.
- Flameproof Motor and FLP Starter with Reversible switch FLP Panel Magnetic Grill for Outlet
- Mechanical Seal
- Sieves available: 0.3 - 12 MM
- Vacuum loading system to charge the material.

Material of Construction:

- Capacity (In HP): 1, 3, 5 and 7.5
- cGMP Model and Design as per ASME guidelines
- MOC: SS304/ SS316/ SS316L/ Hastelloy
- Qualification Documents: IQ, DQ, OQ & FAT Protocol

ADVANCED MANUFACTURING & STORAGE VESSEL



Material of Construction:

- Capacity- 10 - 30000 LTRS
- MOC- SS304/ SS316/ SS316L /MS
- Various types of coating.
- Vessel design as per cGMP/ USFDA/ ASME guidelines.
- Options of Mechanical and Magnetic Stirrer and High Shear Mixer with Sterile flanges
- Load Cell
- Sensors (pH, Conductivity, Temp. etc.) and suitable accessories. Capacity- 10 - 30000 LTRS

Fluid Bed Dryer (FBD) is a kind of equipment used extensively in the pharmaceutical industries to reduce the moisture content of pharmaceutical powder and granules. The wet solids are lifted from the bottom and suspended in a stream of air (fluidized state).

FBD work on the principle of fluidization, a process in which hot gas or air is introduced into the spaces between solid particles. Upward forces on the particles increase as the air's velocity increases causing them to equal the gravitational forces below.

Material of Construction:

- Capacity: 2.5– 500 Kg
- cGMP & Non-GMP Model Available
- MOC- MS / SS304 / SS316 / SS316L / HASTELLOY
- Inflatable silicon tube for bag sealing & product container sealing
- Food Grade Elastomers
- Online Sampling Device
- Telescopic Cylinder for Bag shaking (Top/Side)
- Safety Interlock (Motor Overload, Emergency Shut off, Inlet Temp high- Close steam control valve, Blower failure, low seal gasket pressure- Top & Bottom etc.)
- Steam Valve controlled through Panel with solenoid valve to control the steam temperature
- Qualification Documents- IQ, DQ, OQ & FAT Protocol



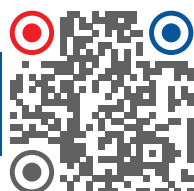
Options:

- Solid Monitor Flow
- PLC with HMI / SCADA
- FLP Motor & FLP Panel
- Double Skin AHU Body
- Air Handling Unit with Hepa Filtration
- Pneumatically operated Inlet & outlet Dampers
- Racking System in the container with Motor, Gear Box, Stirrer, Bearing- Housing & Combined control Panel
- Various type of Coating for Wetted Parts like HALAR / ETFE / PVDF / PFA (Food Grade)
- VFD for Blower
- 21 CFR Part 11- Provision & Compliance
- Silencer
- Rupture Disc

Widely used for material drying in Pharmaceutical and Chemical Industries. It's drying process is based on circulation of hot air through the chamber having material. A Tray Dryer is a convectional drying equipment with enclosed insulated chambers and trays placed on top of each other in a trolley.

Material of Construction:

- Capacity (No. of Trays): 3, 6, 12, 24, 48, 96 & 192
- cGMP Model and Non-GMP Model
- MOC- SS304/SS316/SS316L/Hastelloy
- Various type of Coating for Wetted Parts like HALAR/ ETFE/ PFA/ PVDF/ PP (Food Grade).
- Qualified Documents- IQ, DQ, OQ and FAT Protocol
- Optional Items/Accessories:
- Flame proof Construction
- Double Skin Body
- AHU



ADVANCED VACUUM TRAY DRYER (VTD)

Mainly used for drying of high grade, temperature and oxygen sensitive products. It is highly suitable for drying hygroscopic substances, which are dried on very low residual moisture, content level.

Material of Construction:

- Capacity (No. of Trays): 3, 6, 12, 24, 48, 96 & 192
- cGMP Model and Non-GMP Model
- MOC: MS/SS304/SS316/SS316L/Hastelloy
- Various type of Coating for Wetted Parts like HALAR/ ETFE/ PFA/ PVDF/ PP (Food Grade).
- Qualified Documents: IQ, DQ, OQ and FAT Protocol
- Optional Items/Accessories:
- Flame proof Construction
- Double Skin Body
- AHU



NB: Spare items also available like Gasket, Motor, Filter, Heater, and other components etc.

Advanced Agitated Nutsche Filter Dryer widely used in chemical, pharmaceutical, Agro chemicals, fine chemicals, Herbal, pharma the food industry for filtration, separation, drying of solid + liquid-based slurry.

The closed system which works under pressure / vacuum to separate the solid from liquids. The closed operation ensure safe operation (containment free, without human intervention)

Key Feature of ADVANCED ANFD

- Available in size from 5 Litres to 10,000 Litres
- MOC:- SS316L/SS304/MS/ Hastelloy/ Duplex
- Special Fluoropolymer Coating/ Roto lining /Sheet Lining On contact parts – PFA / Tefzel /ETFE/HALAR/PVDF/PP
- MS/RUBBER LINING, MS/FRP LINING , GLASSFLEX COATING
- Available in Customise design, Monoblock type, Detachable plate type, Super C Bayonet Clamping, Teethed Bayonet etc.
- For filtration dual filtration arrangement can be provided. (Filter cloth+ Multi-layered Sintered Mesh)



Leaf Filter is used for filtration of liquid with higher solid content in edible oil, chemical food & pharmaceutical industry.

The liquid passes through filter leaf leaving behind the solids in the form of a cake. The filtered liquid (filtrate, or clean effluent) exits the filter through the manifold connecting all the filter leaf. The filter cake is then discharged from the vessel either by manually or tilted by hydraulically.

Key Feature of ADVANCED LEAF FILTER

- Leaf Filter can available from size 50 litres to 1000 litres cake holding volume.
- MOC:- SS316L/SS304/MS/ Hastelloy/ Duplex
- Special Fluoropolymer On contact parts – PFA/Tefzel/ETFE/HALAR/PP



Robo Filter is used for filtration/separation of liquid from solid with less manual intervention.

Key Feature of ADVANCED ROBO NUTSCHE FILTER

- Robo Nutsche Filter can available from size 50 litres to 600 litres Filtration volume.
- MOC:- SS316L/SS304/MS/ Hastelloy
- Special Fluoropolymer On contact parts – PFA/ TEFZEL / ETFE / HALAR / PP





Advanced VFD Control Panel On User Requirement & Application

Integration of VFD in Flame Proof & Non Flame Proof Control Panel.
Reputed brand like Siemens, ABB, Allen Bradley, Schneider, Delta & many more based on user requirement.



Advanced Starter Control Panels

Customized PLC Control Panel with integration of Siemens, ABB, Allen Bradley, Schneider, Delta PLC for various machines & process automation.



Advanced PLC & HMI Control Panel

Customized PLC Control Panel with Integration of Siemens, ABB, Allen Bradley, Schneider, Delta PLC for various machines & process automation



Advanced Flame/ Weather Proof PLC & HMI Control Panel

CIMFR / PESO Certified Customized FLP Enclosure with complete design & Integration of PLC & HMI of reputed makes such as Siemens, ABB, Allen Bradley, Schneider, Delta based on customer requirement & application.



Advanced MCC & PCC Control Panel

Compartmentalized Motor Control Panel & Power Control Panels with Integration of reputed make switchgears & accessories.



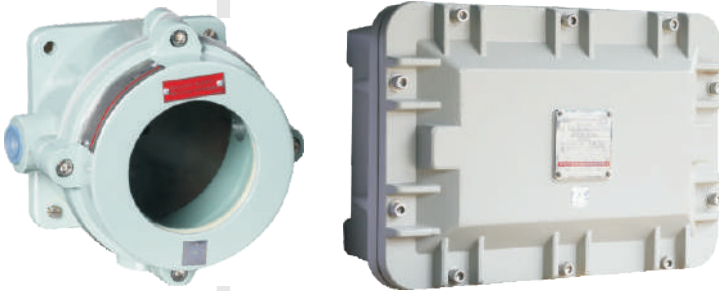
Advanced Flame Proof/ Weather Proof Power Distribution Panel

- CIMFR / PESO Certified FLP Enclosure.
- Gas Group IIA, IIB & IIC.
- Certified for Zone 1 & Zone 2.
- Customized Distribution Panels with reputed make switchgears.



Advanced Flame Proof/weather Proof Electrical Equipments - Hooter, Beacon Lamps, Lights, Switch Sockets Etc.

- CIMFR / PESO Certified FLP Enclosure.
- Gas Group IIA, IIB & IIC.
- Certified for Zone 1 & Zone 2.



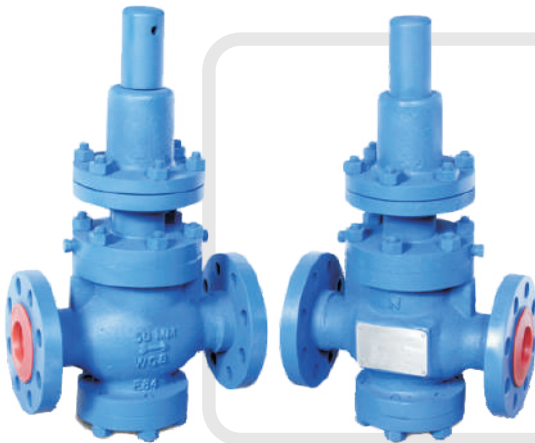
Advanced FLP/WP Junction Box junction Boxes

- CIMFR/PESO Certified FLP Enclosure.
- Gas Group IIA, IIB & IIC.
- Certified for Zone 1 & Zone 2.



Advanced FLP & Non FLP Air Curtains Junction Boxes

- Flame Proof / Weather Proof Air Curtains.
- Suitable for gas group II-A, II-B & II-C
- Certified for Zone 1 & Zone 2.
- Non Flame Proof Air Curtains for clean room area.



Advanced Self Actuated Pressure Control Valve Up Stream/ Down Stream Control Valve

The basic working principal for this valve is force balance principal achieved by spring diaphragm mechanism. This PRV monitors and control outlet pressure irrespective of variation in inlet pressure and flow rate..



Advanced Back Pressure Relief Valve

This BPRV is an active protection device designed to protect the tank from possible over pressurization. The pressurization can be positive or negative.

BPRV is combination of pressure relief valve & vacuum relief valve.

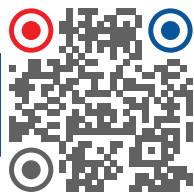


Advanced Gas Flow Transmitter

Gas flow Transmitter for measurement and control of flow of various gas.

Compatible with various communicating devices like PLC & SCADA.

Available in Flame Proof & Non Flame Proof body.



Advanced Nitrogen Blanketing System

Nitrogen blanketing, while widely used in the chemical, pharmaceutical, food processing and refining industries, is often overlooked as a way to improve safety, productivity and quality. Although blanketing is a simple plant practice, there are options for improvements that balance achieving desired safety or quality results with minimizing cost. Poor choices may add cost, waste nitrogen or increase plant emissions.



Application of Nitrogen blanketing system

1. Storage Tank/process Vessel Blanketing
2. Centrifuge Blanketing

Manual Operated Centrifuge Blanketing System

This is a user friendly system where user will operate the purging & blanketing process manually.

For purging & blanketing there are two separate isolation ball valves. During the purging process operator will open one valve for 40-45 secs & once purging is completed, another isolation for blanketing has to be kept open throughout the process.

Timer Based Semi Automated Centrifuge Blanketing System

This system operates automatically based on its timer which is predefined by manufacturer for which the flameproof PLC or control panel will be provided to operate the purging & blanketing valve smoothly as per requirement.

This system also generates an alarm in case low/high pressure, failure of Nitrogen supply, centrifuge lid open.

The most important benefit of this system over manual system will be, loss of N₂ due to human error will be nil.

This system requires Single phase AC/DC supply to operate.

Fully Automated Centrifuge Blanketing System

This system will be provided with flameproof PLC or relay-based control panel. Oxygen analyzer is used which will going to continuously monitor the O₂ level in basket. User can define the desired setpoint. N₂ purging will commence by the start button on the panel, If the O₂ level is less than setpoint, system will move into blanketing mode & will allow the machine to run. If the oxygen level increases than the desired setpoint then process will be repeat from purging.

This system also includes an alarm generator for low & high pressure, N₂ source failure, Lid open, O₂ level high, or any other malfunction.



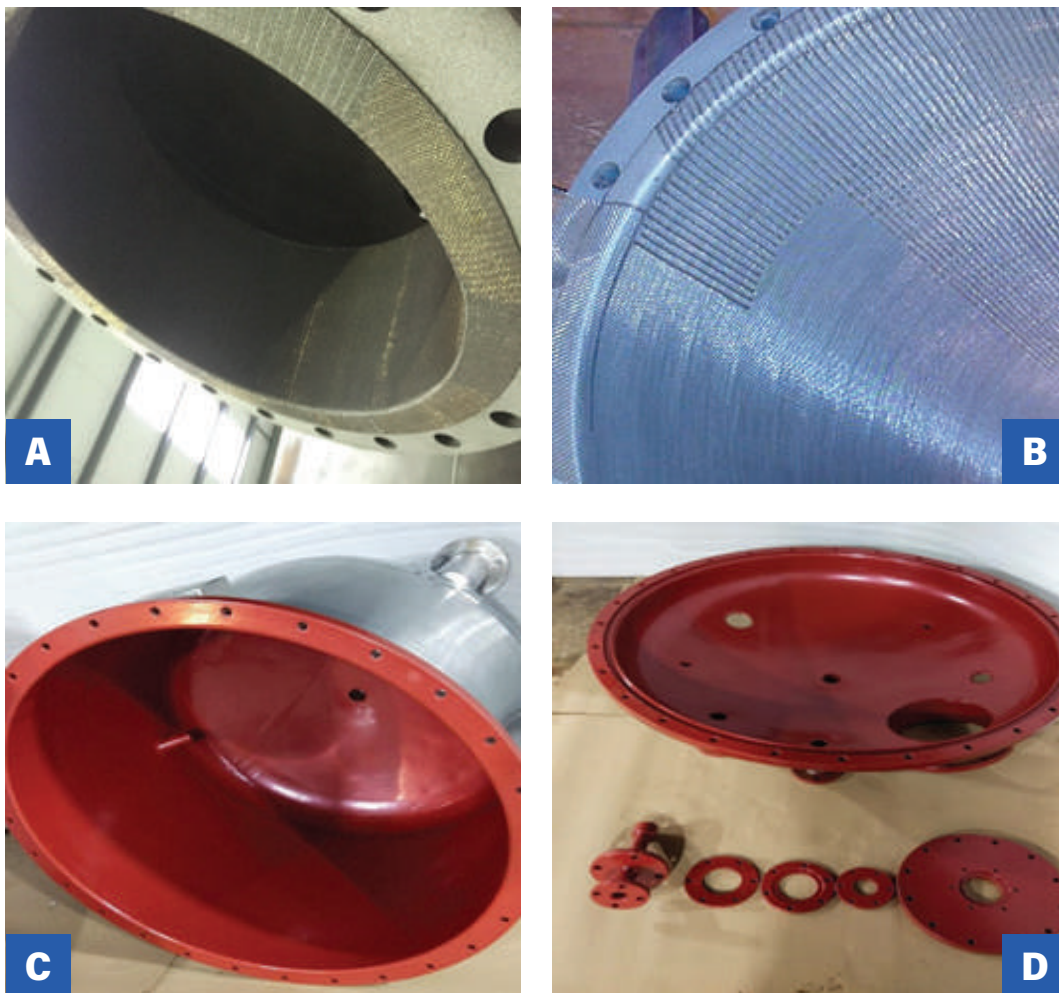
Mesh Welding

Mesh welded coated equipments is a newly developed technique for operations under full vacuum and tough/sharp materials are used.

Advantage is, it is not only suitable under full vacuum but also gives longer life to coating as it causes high and better bonding with metal and polymer. It is also repairable at site.

We have successfully supplied mesh welded coated equipment to M/s SRF Ltd., M/s Lupin Ltd., KVC Process Systems, Aastrid Life Sciences Pvt. Ltd. & Deccan Fine Chemicals which has derived satisfactory results.

A & B: photo of a meshed vessel. The image shows the stainless steel meshed after being spot welded to the vessel interior prior to coating.



C & D: Photo after PFA coating process of the meshed vessel.

PROCEDURE OF MESH WELDING

The 304L/SS 316/MS/SS 316L/BQ wire mesh with a wire thickness of 1 TO 1.2mm is spot welded to the 304L/SS 316/MS/SS 316L/BQ substrate such that the weld seams arc run in the same direction with a distance of 4 openings between each weld run. The size of each welding spot will be 1 to 4mm.



AARTI DRUGS LTD
 AARTI INDUSTRIES LTD
 AASTRID LIFE SCIENCES PVT LTD
 ACME PROCESS SYSTEMS PVT. LTD.
 AETHER INDUSTRIES LTD
 ALEMBIC PHARMACEUTICALS PVT LTD
 ALIVIRA ANIMAL HEALTH LTD
 AMI LIFESCIENCE PVT LTD
 AMNEAL PHARMACEUTICALS
 ANTHEM BIOSCIENCES PVT LTD
 ANUP RASAYAN INDIA LTD
 APOTEX PHARMACHEM INDIA PVT LTD
 ARAGEN LIFE SCIENCES
 ARCH PHARMA LABS LTD
 ARVEE LABORATORIES (INDIA) LTD
 ASG BIOCHEM PVT LTD
 ATUL LTD
 AUROBINDO PHARMA LTD
 AURORE LIFE SCIENCES PVT LTD
 BABA FINE CHEMICALS
 BARC INDIA
 BASF INDIA LTD
 BAYER ZYDUS PHARMA
 BENZO CHEM INDUSTRIES PVT LTD
 BEW ENGINEERING PVT LTD
 BHAGWATI ORGANICS PRIVATE LIMITED
 BIOCON LTD
 BIOPHORE INDIA PHARMACEUTICALS PVT LTD
 CADILA PHARMACEUTICALS LTD
 CHEMINOVA INDIA LTD
 CHEMOFAB INDUSTRIES LLP
 CHEMPLAST SANMAR LIMITED
 CIPLA LTD
 COVALENT LABORATORIES PVT LTD
 CURIA INDIA PRIVATE LIMITED
 DABUR INDIA LTD
 DECCAN FINE CHEMICALS INDIA PVT LTD
 DEEPAK NITRITE LTD
 DISHMAN CARBOGEN AMCIS LTD
 DIVIS LABORATORIES LTD
 DR REDDY'S LABORATORIES LTD
 EISAI PHARMACEUTICALS INDIA PVT LTD
 EMCURE PHARMACEUTICALS LTD

EMMENNAR PAHRMA PVT LTD
 ESCIENTIA ADVANCED SCIENCES PRIVATE LIMITED
 FABTECH TECHNOLOGIES INTERNATIONAL LTD
 FERMENTA BIOTECH LIMITED
 FINORCHEM LIMITED
 FRESENIUS KABI ONCOLOGY LTD
 GLAND PHARMA LTD
 GLENMARK PHARMACEUTICALS LTD
 GMFC LABS PVT LTD
 GODREJ ASTEC LIFESCIENCES LIMITED
 GRANULES INDIA LTD
 GRANULES OMNICHEM PVT LTD
 GRAVITI PHARMACEUTICALS PVT LTD
 GREEN STAR FERTILIZERS LTD
 HARMAN FINOCHEM LIMITED
 HEALTHCARE PHARMACEUTICALS LTD. BANGLADESH
 HEAVY WATER BOARD
 HENKEL ADHESIVE TECHNOLOGIES (I) PVT LTD
 HIKAL LTD
 HINDUSTAN AGRO CHEMICALS LTD
 HLE GLASSCOAT LTD
 HORIBA INDIA PRIVATE LIMITED
 HPL ADDITIVES LTD
 HYGRO CHEMICALS PHARMTEK PVT LTD
 INDO AMINES LTD
 INNOVASSYNTH TECHNOLOGIES (I) LTD
 INNOVATIVE HEALTHCARE (INDIA) PVT. LTD
 INVENTYS RESEARCH COMPANY PVT LTD
 ION EXCHANGE (INDIA) LTD
 IPCA LABORATORIES LTD
 ISAGRO (ASIA) AGROCHEMICALS PVT LTD
 JOFLO INDUSTRIES PVT LTD
 JOHNSON MATTHEY CHEMICALS (I) PVT LTD
 JUBILANT INGREVIA LIMITED
 JUBILANT LIFESCIENCES LTD
 KALHOUR OILFIELD EQUIPMENTS LTD, UAE
 KANCOR INGREDIENTS LTD
 KEVY'S GENERICS PRIVATE LIMITED
 KILBURN ENGINEERING LTD
 KLENZAIDS CONTAMINATION CONTROLS PVT LTD
 LAURUS LABS LTD
 LAVENDER LABORATORIES PVT LTD
 LITMUS ORGANICS PVT. LTD

NB: Above clients are associated with our sister concern companies as well.



LUPIN LTD	ROSS PROCESS EQUIPMENT PVT LTD
MAC- CHEM PRODUCTS (I) PVT LTD	SAI LIFE SCIENCES LTD
MACLEODS PHARMACEUTICALS LTD	SAREX OVERSEAS PVT LTD
MAHI DRUGS PVT LTD	SAURAV CHEMICALS LIMITED
MALLADI DRUGS & PHARMACEUTICALS LTD	SD FINE-CHEM LTD
MANKIND PHARMA LTD	SEQUENT PHARMA PVT LTD
MECHNO-TECH ENGINEERING CORPORATION	SHIV SHAKTI PROCESS EQUIPMENT PVT LTD
MEDIGRAPH PHARMACEUTICALS PVT LTD	SHREE JEE LABORATORY PVT LTD
MEDILUX LABORATORIES PVT LTD	SMS LIFESCIENCES INDIA LTD
MEDITAB SPECIALITIES PVT LTD	SMS PHARMACEUTICALS LTD
MEGAFINE PHARMA PVT. LTD.	SOLARA ACTIVE PHARMA
MELZER CHEMICALS PVT LTD	SRF LTD
MICRO LABS LTD	SRI KRISHNA PHARMACEUTICALS LTD
MYLAN LABORATORIES LTD	SRIKAR LABORATORIES PVT LTD
NANDKRISHNA CHEMICALS PVT LTD	SRINI PHARMACEUTICALS LTD
NATCO PHARMA LTD	STERLING AUXILIARIES PVT LTD
NATIONAL OILWELL VARCO INDIA PRIVATE LIMITED (NOV)	STERLING VINNYL ADDITIVES LLP
NAVIN FLUORINE INTERNATIONAL LTD	SUD-CHEMIE INDIA PVT LTD.
NECTAR LIFESCIENCES LTD	SUN PHARMACEUTICALS INDUSTRIES LTD
NOCIL LTD	SUVEN LIFE SCIENCES LTD
NOSCH LABS PVT LTD	SUYASH LABS PVT LTD
NURAY CHEMICALS PVT LTD	SYNGENE INTERNATIONAL LTD
NUTRA SPECIALITIES PVT LTD	TEVAPHARM INDIA PVT LTD
OLON API INDIA PVT LTD	THE ACME LABORATORIES LTD , BANGLADESH
ONEIRO CHEMICALS PVT LTD	TORRENT PHARMACEUTICALS LTD
OPTRIX LABORATORY PVT LTD	ULTRATECH INDIA LIMITED
ORCHID CHEMICALS & PHARMACEUTICALS LTD	UNICHEM LABORATORIES LTD
PANACEA BIOTEC	UNIMARK REMEDIES LTD
PAR ACTIVE TECHNOLOGIES PRIVATE LIMITED.	UPL LTD
PERFECT ENGINEERING & ALLIED WORKS	USV PRIVATE LIMITED
PFIZER LTD	VASANT CHEMICALS PVT LTD
PHARMAZELL INDIA PVT LTD	VISWAAT CHEMICALS LTD
PI INDUSTRIES LTD	VITAL LABORATORIES PVT LTD
PIDILITE INDUSTRIES LTD	WANBURY LTD
PIRAMAL ENTERPRISES LTD	WILLOWOOD INDUSTRIES PVT LTD
PRASOL CHEMICAL PVT. LTD.	WIPRO WATER
PROCHEM TURNKEY PROJECTS PVT LTD	ZCL CHEMICLAS LTD
PUNJAB CHEMICALS & CROP PROTECTION LTD	ZEST INTERNATIONAL
RAKS PHARMA PRIVATE LIMITED	ZYDUS LIFESCIENCES LIMITED
RAKSHIT DRUGS PVT LTD	THE ACME LABORATORIES LTD, BANGLADESH
RALLIS INDIA LTD	INCEPTA PHARMACEUTICALS LTD, BANGLADESH
RAMPEX LABS PVT LTD	HEALTHCARE CHEMICALS LIMITED, BANGLADESH
RAPTAKOS BRETT & CO. LTD.	

NB: Above clients are associated with our sister concern companies as well.

"Serving From 6 Manufacturing Units Across India"



ADVANCED EXPERTISE TECHNOLOGY PVT. LTD.

**Manufacturer of Pharma / Chemical Equipment
Fluoropolymer Coating & Lining (Rotolining)**

WORKSHOPS

UNIT 1: MUMBAI - I
UNIT 2: MUMBAI - II
UNIT 3: GUJARAT - I
UNIT 4: GUJARAT - II
UNIT 5: VIZAG
UNIT 6: HYDERABAD

SALES OFFICES

MUMBAI
HYDERABAD
VIZAG
UMBERGAON

SALES / SERVICES

NORTH: DELHI / BADDI
WEST: AHMEDABAD / MUMBAI
SOUTH: CHENNAI /
PONDICHERRY/ BANGALORE /
VIZAG

HEAD OFFICE

B - 401, HYDE PARK, SAKI VIHAR ROAD, SAKINAKA, ANDHERI (E), MUMBAI - 400072, INDIA
(M H Choudhary - Managing Director) **Call:** +91 77000 00470 / +91 93242 42869 | **Call:** +91-22-46080471
Email: advanced.etpl@gmail.com / sales@advetpl.com | **Website:** www.advetpl.com

MANUFACTURING UNIT - I

PLOT NO. 50+ 53 P-A/B GIDC INDL. ESTATE, PHASE-1, JUNCTION ROAD - K & C, NEAR TELEPHONE EXCHANGE, UMBERGAON 396171, DIST. VALSAD (GUJARAT).

Call: +91 7700000470 | **Mail:** sales@advetpl.com / advanced.etpl@gmail.com

MANUFACTURING UNIT - II

SURVEY NO.1213, NEAR AMAR TEA, RAIWADI, SANJAN TALUKA, UMBERGAON - 396150, GUJARAT

Call: +91-8425868781 | **Mail:** advanced.etpl@gmail.com

